

<p>Requirement 27 Amendments to approved details</p>	<p>This requirement is again based on a model requirement and the Palm Paper and Wrexham Orders contain similar requirements.</p> <p>It sets out that any amendments to or variations from the approved details, thresholds, plans or schemes must be minor or immaterial and must be unlikely to give rise to any materially new or materially different environmental effects from those already assessed. It also provides clearly that any references to approved details, plans or schemes will include any subsequently approved amendments.</p>
<p>Requirement 28 Accident and emergency response</p>	<p>This is a similarly bespoke requirement which provides that no phase of the authorised development may commence until an accident and emergency response plan has been submitted to and approved in writing by the RLPA and implemented as approved. It must be maintained for the duration of use of the authorised development.</p> <p>Whilst the extent of risk associated with the authorised project has been assessed and findings are contained in Chapter 15 of the Environmental Statement; Major Accidents [APP-057], it is standard practice to maintain and adhere to such a plan and the draft Order just codifies that practice.</p>
<p>Requirement 29 Electrical output limitation</p>	<p>This requirement is a bespoke requirement included following consultation with the Environment Agency.</p> <p>The Applicant has not yet provided sufficient information to demonstrate that it is technically feasible and that there is sufficient space to retrofit a carbon capture plant for a 1,700 MWe power output within the Order limits, but the Environment Agency is satisfied that there is sufficient space for a 1,520 MWe power output.</p> <p>This requirement limits the output to 1,520 MWe until the undertaker can demonstrate to the satisfaction of the RLPA, in consultation with the Environment Agency, that a maximum output of 1,700 MWE is feasible.</p> <p>The Applicant believes this output will be feasible in the near future due to improvements in technology.</p>

- 6.3 There are some requirements which are included in a number of other similar development consent orders that are not included in the draft Tees Combined Cycle Power Plant Order as they are not necessary for this particular Project. For example:
- There is no requirement relating to the setting up of a local liaison committee, because the Wilton International site operates its own procedures and as part of that the Applicant already meets with R&CBC, the Industrial Briefing Group (IBG) and Lazenby Environment Group (LEG) on a regular basis. For further information about the IBG and LEG see the Consultation Report [APP-032].
  - An Environmental Permit is already in place with reference QR.25/04/1528 (annexed to this document for ease of reference at Annex 3) which permits the discharge of sewage and trade effluent from the Wilton International site in accordance with the terms of the permit. There is no requirement imposed in relation to foul water drainage as a permitted system is already in place and the Project will connect into that system.

#### **6.4 SCHEDULE TWO (PROCEDURE IN RELATION TO DISCHARGE OF REQUIREMENTS)**

This Schedule sets out the process to be followed in relation to applications made to a discharging authority for any agreement or approval required by a requirement in the Order. It is largely based on similar provisions in the Knottingley and Wrexham Orders.

- Paragraph 1 contains some key defined terms relevant to Schedule Two.
- Paragraph 2 provides a clear procedure and sets out time limits for the discharge of requirements by the RLPA. The RLPA must notify the undertaker of its decision either: --
  - within thirty business days of the day after it received the application; or
  - within thirty business days of the day after the undertaker has supplied further information that may be requested by the RLPA in relation to the application; or
  - within a longer time period that may be agreed.

If the application is not determined within the relevant time period, it is deemed that the RLPA has granted all parts of the application, save for where it is likely that the subject matter of such application will give rise to any materially new or materially different environmental effects, in which case the application will be deemed to have been refused.

- Paragraph 3 makes provision for circumstances where the RLPA decides further information should be provided in relation to an application for the discharge of a requirement:
  - the RLPA should make such a request within ten business days of receiving the application.
  - in the event consultation is required with another authority, for example with the LHA or with the HSE, the RLPA must issue a consultation to the relevant consultee within five business days of it receiving the application.
  - thereafter the consultee must provide details of any further information it requires in order to respond to the consultation within ten business days of receiving the consultation.
  - any such request for additional information must be passed to the undertaker by the RLPA within five days of receipt. Where these time limits are not adhered to, the RLPA is treated as having sufficient information to consider the application and the time limits for deciding the application as summarised above will apply.
- Paragraph 4 sets out the process for appealing to the Secretary of State in respect of decisions on applications for discharge of requirements:

- if the undertaker wants to appeal against a decision it must submit a copy of the application to the Secretary of State who must appoint a person to determine the appeal (who must be a qualified town planner of at least ten years' experience);
- the undertaker must also send a copy of their appeal to the RLPA and any consultee where relevant;
- the RLPA (and any consultee where relevant) may submit representations within ten business days of the day after they received notice of the appeal;
- counter representations may be made within ten business days of the day after the date of receipt of any written representations; and
- the appointed person must decide the appeal as soon as reasonably practicable.
- Paragraph 5 deals with the outcome of appeals and gives the appointed person the power to allow or dismiss an appeal or reverse or vary part of the RLPA's decision. The decision of the appointed person will be final and binding on all parties.

**Annex 1 – Application Guide**

# **Tees CCPP Project**

## **The Tees Combined Cycle Power Plant Project**

### **Land at the Wilton International Site, Teesside**

#### **Application Guide – Final (Rev 3.0)**

#### **The Planning Act 2008 (as amended)**

#### **The Infrastructure Planning (Applications: Prescribed Forms and Procedure) Regulations 2009**

#### **Regulation 5(2)(q)**



**Applicant:** Sembcorp Utilities (UK) Limited  
**Date:** October 2018

## DOCUMENT HISTORY

<b>Document Ref</b>	1.2		
<b>Revision</b>	3.0		
<b>Author</b>	Jake Barnes-Gott (JBG)		
<b>Signed</b>	JBG	<b>Date</b>	03.10.18
<b>Approved By</b>	Geoff Bullock (GB)		
<b>Signed</b>	GB	<b>Date</b>	03.10.18
<b>Document Owner</b>	DWD		

## GLOSSARY

<b>Abbreviation</b>	<b>Description</b>
2009 EIA Regulations	The Infrastructure Planning (Environmental Impact Assessment) Regulations 2009
2017 EIA Regulations	The Infrastructure Planning (Environmental Impact Assessment) Regulations 2017
APFP Regulations	The Infrastructure Planning (Applications: Prescribed Forms and Procedures) Regulation 2009
Applicant	Semcorp Utilities (UK) Limited
DCO	Development Consent Order
EIA	Environmental Impact Assessment
ES	Environmental Statement
MW	megawatts
NSIP	Nationally Significant Infrastructure Project
Order	Tees Combined Cycle Power Plant (Generating Station) Order
PA 2008	The Planning Act 2008
RCBC	Redcar and Cleveland Borough Council
SCU	Semcorp Utilities (UK) Limited
SoS	Secretary of State

---

## CONTENTS

1	INTRODUCTION .....	3
	<i>Overview</i> .....	3
	<i>SCU</i> .....	3
	<i>The Project Site</i> .....	3
	<i>The Proposed Development</i> .....	4
	<i>The purpose and structure of this document</i> .....	4
2	DOCUMENTS .....	5

## TABLES

TABLE 2.1 – APPLICATION DOCUMENTS .....	6
---	---

## **1 INTRODUCTION**

### **Overview**

- 1.1 This document has been prepared on behalf of Sembcorp Utilities (UK) Limited ('SCU' or the 'Applicant') in respect of its application (the 'Application') for a Development Consent Order (a 'DCO'). The Application was accepted for examination by the Secretary of State (the 'SoS') for Business, Energy and Industrial Strategy on 18 December 2017. The 'Examination' began on 10 April 2018.
- 1.2 SCU is seeking a DCO for the construction, operation and maintenance of a new gas-fired electricity generating station with a nominal net electrical output capacity of up to 1,700 megawatts ('MW') at ISO conditions (the 'Project' or 'Proposed Development'), on the site of the former Teesside Power Station, which forms part of the Wilton International Site, Teesside.
- 1.3 A DCO is required for the Proposed Development as it falls within the definition and thresholds for a 'Nationally Significant Infrastructure Project' (a 'NSIP') under Sections 14 and 15(2) of the Planning Act 2008 ('PA 2008').
- 1.4 The DCO, if made by the SoS, would be known as the 'Tees Combined Cycle Power Plant Order' (the 'Order').

### **SCU**

- 1.5 SCU provides vital utilities and services to major international process industry customers on the Wilton International site on Teesside. Part of Sembcorp Industries, a Singapore-based group providing energy, water and marine services globally, Sembcorp Utilities UK also owns some of the industrial development land on the near 810 hectares (2,000 acre) site which is marketed to energy intensive industries worldwide.
- 1.6 SCU owns the land required for the Proposed Development.

### **The Project Site**

- 1.7 The Project Site (the 'Site') is on the south west side of the Wilton International Site, adjacent to the A1053. The Site lies entirely within the administrative area of Redcar and Cleveland Borough Council ('RCBC') which is a unitary authority.
- 1.8 Historically the Site accommodated a 1,875 MW Combined Cycle Gas Turbine power station (the former Teesside Power Station) with the ability to generate steam for utilisation within the wider Wilton International site. The Teesside Power Station ceased generation in 2013 and was demolished between 2013 and 2015.
- 1.9 SCU has identified the Site, based on its historical land use and the availability of natural gas supply and electricity grid connections and utilities as a suitable location for the Project. In summary, the benefits of the Site include:
- brownfield land that has previously been used for power generation;
  - on-site gas connection, supplied from existing National Grid Gas Plc infrastructure;
  - on-site electrical connection, utilising existing National Grid Electricity Transmission infrastructure;
  - existing internal access roads connecting to a robust public road network;
  - availability of a cooling water supply using an existing contracted supply (from the Wilton Site mains) and existing permitted discharge consent for effluent to the site drainage system
  - screening provided by an existing southern noise control wall, approximately 6 m in height;
  - potential for future Combined Heat and Power ('CHP') and Carbon Capture and Storage ('CCS'); and



- existing services, including drainage.

1.10 A more detailed description of the Site is provided at Chapter 3 ‘Description of the Site’ of the Environmental Statement (‘ES’) Volume 1 (Application Document Ref. 6.2.3).

### **The Proposed Development**

1.11 The main components of the ‘Proposed Development are summarised below:

- **Work No. 1** – a natural gas fired electricity generating station located on land within the Wilton International site, Teesside, which includes the site of a former CCGT power station, with a nominal net electrical output capacity of up to 1,700 MWe at ISO Conditions; and
- **Work No. 2** – associated development comprising within the meaning of section 115(2) of the 2008 Act in connection with the nationally significant infrastructure project referred to in Work No. 1.

1.12 Please refer to Schedule 1 of the Draft DCO (Application Document Ref. 2.1) for more detail.

1.13 It is anticipated that subject to the DCO having been made by the SoS (and a final investment decision by SCU), construction work on the Project would commence in around the second half of 2019. The construction of the Project could proceed under one of two scenarios, based on SCU’s financial modelling, as follows.

- **‘Scenario One’**: two CCGT ‘trains’ of up to 850 MW are built in a single phase of construction to give a total capacity of up to 1,700 MW.
- **‘Scenario Two’**: one CCGT train of up to 850 MW is built and commissioned. Within an estimated five years of its commercial operation the construction of a further CCGT train of up to 850 MWe commences.

1.14 The above scenarios have been fully assessed within the ES.

1.15 A more detailed description of the Project is provided at Schedule 1 ‘Authorised Development’ of the draft DCO (Application Document Ref. 2.1) and Chapter 5 ‘Project Description’ of the ES Volume 1 (Application Document Ref. 6.2.5).

### **The purpose and structure of this document**

1.16 The purpose of this Application Guide is to list the documents (the ‘Application Documents’) that make up the Application submitted to the SoS, in addition to the documents submitted during the Examination of the Application.

## **2 DOCUMENTS**

- 2.1 The Application Documents have been grouped into appropriate categories in **Table 2.1** (on the following pages) and each has been given its own document reference number.
- 2.2 **Table 2.1** details the submission version (i.e. the version submitted as part of the Application on 22 November 2017), where relevant, in addition to the current version of the document along with the date that the current version was submitted.

**Document Ref. 2.1  
Application Guide – Final (Rev 3.0)**

**Table 2.1 – Application Documents**

<b>Document Reference (Ref.)</b>	<b>Document Name</b>	<b>Submission version</b>	<b>Current Version</b>	<b>Date / Deadline Current Version Submitted</b>
<b>Category 1.0</b>	<b>Application Form and related documents</b>	-	-	22.11.17 – Original Submission
1.1	Application Cover Letter	2.0	3.0	03.10.18 – Deadline 8
1.2	Application Guide (this document)	1.0	1.0	22.11.17 – Original Submission
1.3	Application Form	1.0	1.0	22.11.17 – Original Submission
1.4	Notices for Statutory Publicity	1.0	1.0	22.11.17 – Original Submission
<b>Category 2.0</b>	<b>Draft Development Consent Order</b>			
2.1	Draft Development Consent Order – Final Version (Version 7) in Statutory Instrument Template	2.0	7.0	03.10.18 – Deadline 8
2.2	Explanatory Memorandum – Final Version (Version 4)	1.0	4.0	22.11.17 – Original Submission
<b>Category 3.0</b>	<b>Land Information</b>			
3.1	Schedule of Land Ownership and Interests	1.0	1.0	22.11.17 – Original Submission
<b>Category 4.0</b>	<b>Plans, Drawings and Sections</b>			
4.1	Location Plan (Sheets 1-3)	2.0	2.0	22.11.17 – Original Submission
4.2	Land Plan	2.0	2.0	22.11.17 – Original Submission
4.3	Works Plan (Sheets 1-5)	4.0	1.0	16.05.18 – Deadline 2
4.4	Existing Access Plan	2.0	2.0	22.11.17 – Original Submission
4.5	Indicative Generating Station Plan (Sheet 1)	1.0	2.0	22.11.17 – Original Submission
4.5	Indicative Generating Station Plan (Sheet 2)	1.0	1.0	22.11.17 – Original Submission
4.5	Indicative Generating Station Plan (Sheet 3)	3.0	4.0	16.05.18 – Deadline 2
4.6	Indicative Electrical Connection Plan	2.0	2.0	22.11.17 – Original Submission
4.7	Indicative Demineralised Water Connection Plan	4.0	4.0	22.11.17 – Original Submission
4.8	Indicative Potable Water Connection Plan	3.0	3.0	22.11.17 – Original Submission
4.9	Indicative Gas Connection Plan	3.0	3.0	22.11.17 – Original Submission
4.10	Indicative Drainage Plan (Sheets 1-3)	3.0	3.0	22.11.17 – Original Submission
4.11	Indicative Landscaping Plan	4.0	4.0	22.11.17 – Original Submission
4.12	Nationally Designated Sites Within 15km	1.0	1.0	22.11.17 – Original Submission
4.13	Listed Buildings and Scheduled Ancient Monuments within 2km	1.0	100	22.11.17 – Original Submission
<b>Category 5.0</b>	<b>Reports and Statements</b>			

**Deadline 8  
October 2018**

**Document Ref. 2.1  
Application Guide – Final (Rev 3.0)**

Document Reference (Ref.)	Document Name	Submission version	Current Version	Date / Deadline Current Version Submitted
5.1	Consultation Report	7.0	7.0	22.11.17 – Original Submission
5.2	Electricity Grid Connection Statement	1.0	1.0	22.11.17 – Original Submission
5.3	Gas Connection Statement	1.0	1.0	22.11.17 – Original Submission
5.4	Other Consents and Licences	1.0	3.0	03.10.18 – Deadline 8
5.5	Planning Statement	2.0	2.0	22.11.17 – Original Submission
5.6	Design and Access Statement	3.0	4.0	16.05.18 – Deadline 2
5.7	Combined Heat and Power Assessment	1.0	1.0	22.11.17 – Original Submission
5.8	Capture and Storage & Carbon Capture Readiness Statement	1.0	2.0	16.05.18 – Deadline 2
5.9	Statutory Nuisance Statement	1.0	1.0	22.11.17 – Original Submission
<b>Category 6.0</b>	<b>Environmental Impact Assessment Information</b>			
6.1	Environmental Statement Non-Technical Summary	1.0	1.0	22.11.17 – Original Submission
6.2	Environmental Statement – Volume 1 (Main Report)	1.0	1.0	22.11.17 – Original Submission
6.2.1	Environmental Statement – Chapter 1 Introduction	1.0	1.0	22.11.17 – Original Submission
6.2.2	Environmental Statement – Chapter 2 Legislation, Policy and Guidance	1.0	1.0	22.11.17 – Original Submission
6.2.3	Environmental Statement – Chapter 3 EIA Approach and Methodology	1.0	1.0	22.11.17 – Original Submission
6.2.4	Environmental Statement – Chapter 4 Overview of Environmental and Socioeconomic Baseline	1.0	1.0	22.11.17 – Original Submission
6.2.5	Environmental Statement – Chapter 5 Project Description and Alternatives	2.0	3.0	16.05.18 – Deadline 2
6.2.6	Environmental Statement – Chapter 6 Ground Conditions, Water Resources and Flooding	1.0	1.0	22.11.17 – Original Submission
6.2.7	Environmental Statement – Chapter 7 Air Quality	2.0	3.0	16.05.18 – Deadline 2
6.2.8	Environmental Statement – Chapter 8 Noise and Vibration	1.0	1.0	22.11.17 – Original Submission
6.2.9	Environmental Statement – Chapter 9 Ecology and Nature Conservation	1.0	1.0	22.11.17 – Original Submission
6.2.10	Environmental Statement – Chapter 10 Traffic and Transport	1.0	1.0	22.11.17 – Original Submission
6.2.11	Environmental Statement – Chapter 11 Landscape and Visual	3.0	3.0	16.05.18 – Deadline 2

**Deadline 8  
October 2018**

**Document Ref. 2.1  
Application Guide – Final (Rev 3.0)**

<b>Document Reference (Ref.)</b>	<b>Document Name</b>	<b>Submission version</b>	<b>Current Version</b>	<b>Date / Deadline Current Version Submitted</b>
	Amenity			
6.2.12	Environmental Statement – Chapter 12 Cultural Heritage	1.0	1.0	22.11.17 – Original Submission
6.2.13	Environmental Statement – Chapter 13 Socio Economic Characteristics	1.0	1.0	22.11.17 – Original Submission
6.2.14	Environmental Statement – Chapter 14 Human Health	1.0	1.0	22.11.17 – Original Submission
6.2.15	Environmental Statement – Chapter 15 Major Accidents	1.0	1.0	22.11.17 – Original Submission
6.2.16	Environmental Statement – Chapter 16 – Summary of Cumulative and Indirect Effects	1.0	1.0	22.11.17 – Original Submission
6.2.17	Environmental Statement – Chapter 17 Mitigation Register	1.0	1.0	22.11.17 – Original Submission
6.2.18	Environmental Statement – Chapter 18 Conclusions	1.0	1.0	22.11.17 – Original Submission
6.3	Environmental Statement – Volume 2 (Annexes)	1.0	1.0	22.11.17 – Original Submission
6.3.1 Annex A	Scoping Report	1.0	1.0	22.11.17 – Original Submission
6.3.2 Annex B	Scoping Opinion	1.0	1.0	22.11.17 – Original Submission
6.3.3 Annex C	Flood Risk Assessment	1.0	1.0	22.11.17 – Original Submission
6.3.4 Annex D1	Phase 1 Habitat Survey	1.0	1.0	22.11.17 – Original Submission
6.3.5 Annex D2	Envirocheck	1.0	1.0	22.11.17 – Original Submission
6.3.6 Annex D3	Site Condition Report	1.0	1.0	22.11.17 – Original Submission
6.3.7 Annex D4	Waste Management Plan	1.0	1.0	22.11.17 – Original Submission
6.3.8 Annex E1	Stack Height Assessment	1.0	1.0	22.11.17 – Original Submission
6.3.9 Annex E2	Green House Gas Assessment	1.0	1.0	22.11.17 – Original Submission
6.3.10 Annex F1	Noise Baseline	1.0	1.0	22.11.17 – Original Submission
6.3.11 Annex F2	Noise Model Inputs and Results	1.0	1.0	22.11.17 – Original Submission
6.3.12 Annex G1	Effects of Air Quality on Nationally and Locally Designated Sites	1.0	1.0	22.11.17 – Original Submission
6.3.13 Annex G2	Preliminary Ecological Appraisal	1.0	1.0	22.11.17 – Original Submission
6.3.14 Annex G3	Breeding Bird Survey	1.0	1.0	22.11.17 – Original Submission
6.3.15 Annex H	Habitats Regulations Assessment	1.0	2.0	24.04.18 – Deadline 1
6.3.16 Annex I1	Transport Assessment	1.0	1.0	22.11.17 – Original Submission
6.3.17 Annex I2	Draft Construction Transport Management Plan	1.0	2.0	16.05.18 – Deadline 2
6.3.18 Annex J	Gazetteer of Non- Designated Heritage Assets	1.0	1.0	22.11.17 – Original Submission
6.3.19 Annex K	Landscape and Visual Amenity	2.0	3.0	16.05.18 – Deadline 2

**Deadline 8  
October 2018**

**Document Ref. 2.1  
Application Guide – Final (Rev 3.0)**

<b>Document Reference (Ref.)</b>	<b>Document Name</b>	<b>Submission version</b>	<b>Current Version</b>	<b>Date / Deadline Current Version Submitted</b>
6.3.20 Annex L	Draft Construction Environmental Management Plan	1.0	5.0	26.09.18 – Deadline 7
<b>Category 7.0</b>	<b>Statement of Common Ground ('SoCGs')</b>			
7.1	Tees Valley Wildlife Trust SoCG	1.0	2.0	16.05.18 – Deadline 2
7.2	Natural England SoCG	1.0	2.0	16.05.18 – Deadline 2
7.3	Redcar and Cleveland Borough Council SoCG	1.0	4.0	06.07.18 – Deadline 4
7.4	Environment Agency SoCG	1.0	5.0	27.09.18 – Deadline 7
7.5	National Grid SoCG	1.0	2.0	16.05.18 – Deadline 2
7.6	Civil Aviation Authority SoCG	1.0	2.0	16.05.18 – Deadline 2
7.9	Statement of Commonality for SoCG	1.0	1.0	16.05.18 – Deadline 2
<b>Category 8.0</b>	<b>Examination Documents</b>			
-	<b>Deadline 1 cover letter</b>	-	-	24.04.18 – Deadline 1
8.1	Non-material change cover letter	-	1.0	02.05.18 – Deadline 2
8.2	Implications of Requested Change on EIA note	-	1.0	02.05.18 – Deadline 2
8.3	Schedule of Application Documents and Plans to be Amended	-	1.0	02.05.18 – Deadline 2
8.4	<b>Deadline 2 cover letter</b>	-	-	16.05.18 – Deadline 2
8.5	Applicant's Comments on Relevant Representations	-	1.0	16.05.18 – Deadline 2
8.6	Applicant's Responses to the ExA's Written Questions	-	1.0	16.05.18 – Deadline 2
8.7	Applicant's Written Summary of Oral Case	-	1.0	16.05.18 – Deadline 2
5.8	Capture and Storage & Carbon Capture Readiness Statement	1.0	2.0	16.05.18 – Deadline 2
6.3.17	ES Annex I2 Draft CTMP	1.0	2.0	16.05.18 – Deadline 2
6.3.19	ES Annex L CEMP	1.0	2.0	16.05.18 – Deadline 2
8.8	Figure 9.1	-	1.0	16.05.18 – Deadline 2
8.9	Abbreviation List	-	1.0	16.05.18 – Deadline 2
8.10	Updated Mitigation Table	-	1.0	16.05.18 – Deadline 2
8.11	Figure 11.3	-	1.0	16.05.18 – Deadline 2
8.12	Figure 11.4	-	1.0	16.05.18 – Deadline 2
8.13	Figure C3.1	-	1.0	16.05.18 – Deadline 2
8.14	Table 3.2 update	-	1.0	16.05.18 – Deadline 2
8.15	Register and Title Plan CE115855	-	1.0	16.05.18 – Deadline 2
8.16	Drawing GIS-00-L-02801	-	0	16.05.18 – Deadline 2

**Deadline 8  
October 2018**

**Document Ref. 2.1  
Application Guide – Final (Rev 3.0)**

<b>Document Reference (Ref.)</b>	<b>Document Name</b>	<b>Submission version</b>	<b>Current Version</b>	<b>Date / Deadline Current Version Submitted</b>
8.17	Register and Title Plan CE189675	-	1.0	16.05.18 – Deadline 2
8.18	Plan GIS-00-L-02691	-	0	16.05.18 – Deadline 2
8.19	Plan supplied by NPG	-	-	16.05.18 – Deadline 2
8.20	Natural England letter	-	-	16.05.18 – Deadline 2
8.21	GIS-00-L-02668	-	0	16.05.18 – Deadline 2
8.22	Figure 5.3	-	0	16.05.18 – Deadline 2
8.23	Figure 5.4	-	0	16.05.18 – Deadline 2
8.24	GIS-00-L-02754	-	2.0	16.05.18 – Deadline 2
8.25	NWL email	-	-	16.05.18 – Deadline 2
8.26	GIS-00-L-02693	-	0	16.05.18 – Deadline 2
8.27	Mike Gent email	-	-	16.05.18 – Deadline 2
4.5	Revised Indicative Generating Station Plan – Sheet 3	4.0	4.0	16.05.18 – Deadline 2
4.3	Works Plan 1	4.0	1.0	16.05.18 – Deadline 2
4.3	Works Plan 2	4.0	1.0	16.05.18 – Deadline 2
4.3	Works Plan 3	4.0	1.0	16.05.18 – Deadline 2
4.3	Works Plan 4	4.0	1.0	16.05.18 – Deadline 2
4.3	Works Plan 5	4.0	1.0	16.05.18 – Deadline 2
8.34	<b>Deadline 3 cover letter</b>	-	-	29.05.18 – Deadline 3
8.35	Applicant's Comments on the Environment Agency's Responses to the Examiner's Written Questions	-	-	29.05.18 – Deadline 3
8.36	Applicant's Comments on the Environment Agency's Written Representations	-	1.0	29.05.18 – Deadline 3
8.37	Applicant's Comments on Redcar and Cleveland Borough Council's Responses to the Examiner's Written Questions	-	1.0	29.05.18 – Deadline 3
8.39	Applicant's Comments on Redcar and Cleveland Borough Council's Responses to the Examiner's Written Questions – Additional Responses	-	1.0	29.05.18 – Deadline 3
8.40	Non-Material Change Consultation Report	-	1.0	27.06.18 – Deadline 4
8.41	<b>Deadline 4 Submission 1 Cover Letter</b>	-	-	06.07.18 – Deadline 4
8.42	<b>Deadline 4 Submission 2 Cover Letter</b>	-	-	06.07.18 – Deadline 4

**Deadline 8  
October 2018**

**Document Ref. 2.1  
Application Guide – Final (Rev 3.0)**

<b>Document Reference (Ref.)</b>	<b>Document Name</b>	<b>Submission version</b>	<b>Current Version</b>	<b>Date / Deadline Current Version Submitted</b>
6.3.19	Annex L CEMP – Tracked	1.0	3.0	06.07.18 – Deadline 4
6.3.19	Annex L CEMP – Clean	1.0	3.0	06.07.18 – Deadline 4
7.3	Redcar and Cleveland Borough Council SoCG	1.0	4.0	06.07.18 – Deadline 4
8.43	Written Summary of Oral Case – Env Matters	-	1.0	06.07.18 – Deadline 4
8.44	Written Summary of Oral Case – Draft DCO	-	1.0	06.07.18 – Deadline 4
8.45	Updated Draft DCO (Version 3)	-	3.0	06.07.18 – Deadline 4
8.46	DCO Changes Summary Table	-	-	06.07.18 – Deadline 4
8.47	Follow up items on Air Quality	-	1.0	06.07.18 – Deadline 4
8.48	Detailed Habitats Regulations Assessment data (Excel file)	-	-	06.07.18 – Deadline 4
8.45	<b>Deadline 5 Cover Letter</b>	-	-	-
8.46	Applicant's Response to the FWQs	-	1.0	07.08.18 – Deadline 5
8.47	Updated DCO – Clean (Version 4)	1.0	4.0	07.08.18 – Deadline 5
8.48	Updated DCO – Tracked (Version 4)	1.0	4.0	07.08.18 – Deadline 5
8.49	<b>Deadline 6 Cover Letter</b>	-	-	22.08.18 – Deadline 6
8.50	Applicant's Comments on the Responses to Examining Authority's Second Written Questions	-	1.0	22.08.18 – Deadline 6
8.51	Updated DCO – Clean (Version 5)	-	5.0	22.08.18 – Deadline 6
8.52	Updated DCO – Tracked (Version 5)	-	5.0	22.08.18 – Deadline 6
8.53	Explanatory Memorandum (Version 3) – Clean	-	3.0	22.08.18 – Deadline 6
8.54	Explanatory Memorandum (Version 3) – Tracked	-	3.0	22.08.18 – Deadline 6
8.55	<b>Deadline 7 Submission 1 Cover Letter</b>	-	-	06.09.18 – Deadline 7
8.56	Tees Carbon Capture Sizing Studies – Support to Carbon Capture Readiness Report	-	4.0	06.09.18 – Deadline 7
8.57	Assessment of the CCR Compliance of the Tees Combined Cycle Power Plant Project	-	-	06.09.18 – Deadline 7
8.58	<b>Deadline 7 Submission 2 Cover Letter</b>	-	-	26.09.18 – Deadline 7
8.59	Applicant's Comment on the Response to Examining Authority's Second Written Questions	-	1.0	26.09.18 – Deadline 7
8.60	HRA Addendum	-	1.0	26.09.18 – Deadline 7
8.61	Stack Sensitivity Analysis	-	1.0	26.09.18 – Deadline 7

**Deadline 8  
October 2018**



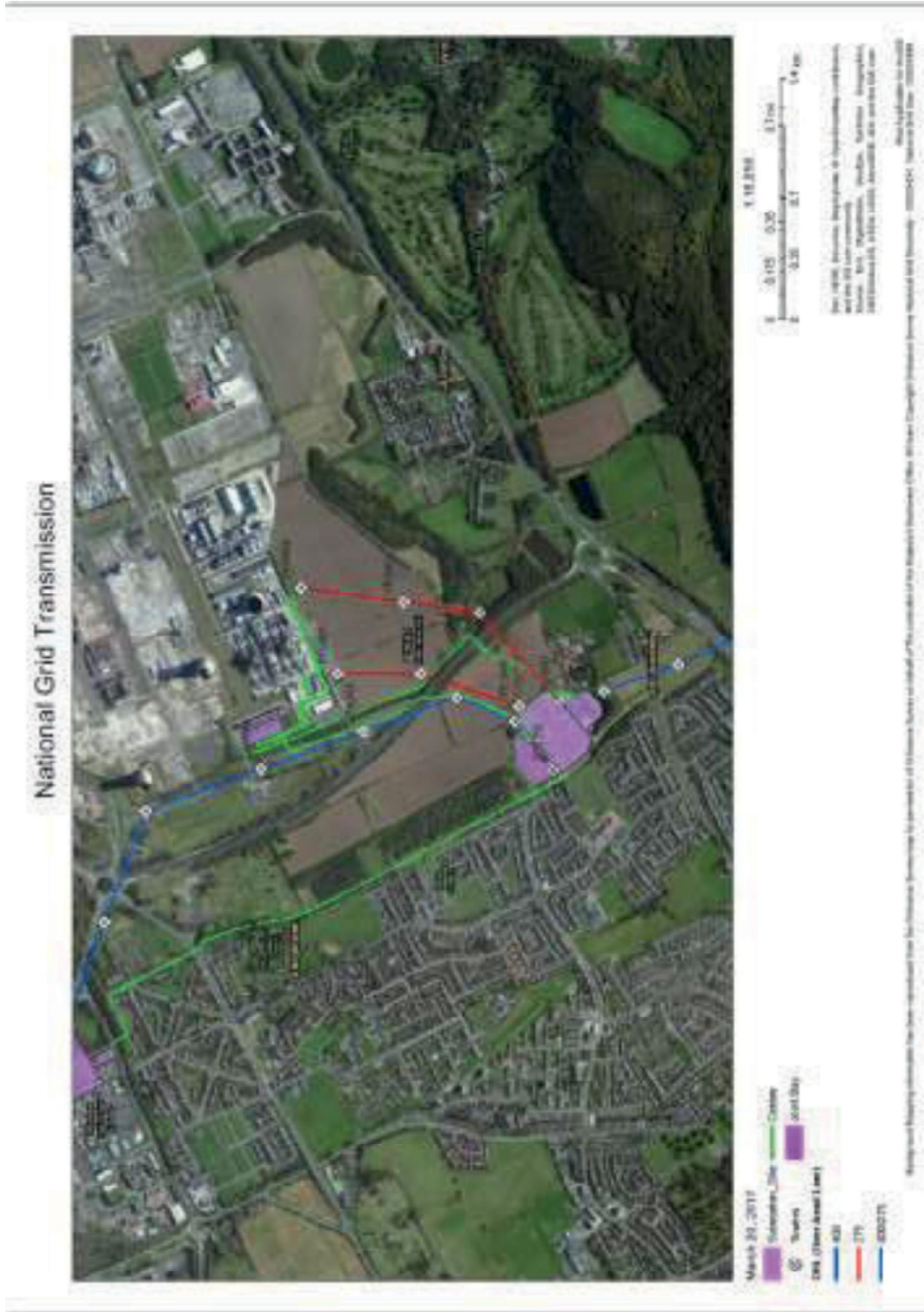
**Document Ref. 2.1  
Application Guide – Final (Rev 3.0)**

<b>Document Reference (Ref.)</b>	<b>Document Name</b>	<b>Submission version</b>	<b>Current Version</b>	<b>Date / Deadline Current Version Submitted</b>
8.62	Updated Draft DCO – Clean (Version 6)	-	6.0	26.09.18 – Deadline 7
8.63	Updated Draft DCO – Tracked (Version 6)	-	6.0	26.09.18 – Deadline 7
8.64	AECOM memo dated 19 September 2018	-	-	26.09.18 – Deadline 7
8.65	Section 106 Agreement – Final – Unsigned	-	-	26.09.18 – Deadline 7
8.66	<b>Deadline 7 Submission 3 Cover Letter</b>	-	-	27.09.18 – Deadline 7
7.4	Environment Agency SoCG	1.0	5.0	27.09.18 – Deadline 7
8.67	<b>Deadline 8 Cover Letter</b>	-	-	03.10.18 – Deadline 8
2.1	Draft DCO – Final Version (Version 7) in Statutory Instrument Template	1.0	7.0	03.10.18 – Deadline 8
8.69	Draft DCO – Tracked (Version 7)	1.0	7.0	03.10.18 – Deadline 8
2.2	Explanatory Memorandum – Final Version (Version 4)	1.0	4.0	03.10.18 – Deadline 8
8.71	Explanatory Memorandum – Tracked (Version 4)	1.0	4.0	03.10.18 – Deadline 8
5.4	Other Consents and Licenses Document (Version 3)	1.0	3.0	03.10.18 – Deadline 8

**Deadline 8  
October 2018**

**Annex 2 – NG Consultation Responses**

National Grid 1 of 4



## National Grid 2 of 4

**nationalgrid**

National Grid House  
Warwick Technology Park  
Gailows Hill, Warwick  
CV34 6DA

Sent electronically to:

[enquiries@tccpp.co.uk](mailto:enquiries@tccpp.co.uk)

Nick Dexter  
DCO Liaison Officer  
Land & Business Support

Tel: +44 [REDACTED]

[www.nationalgrid.com](http://www.nationalgrid.com)

20<sup>th</sup> July 2017

Dear Sir/Madam,

**The Teesside Combined Cycle Power Plant project  
Consultation in accordance with Section 42 of the Planning Act 2008**

I refer to your letter dated 14<sup>th</sup> June 2017 in relation to the proposed Teesside Combined Cycle Power Plant Consultation in accordance with Section 42 of the Planning Act 2008. Having reviewed the consultation documents, I would like to make the following comments:

**National Grid infrastructure within / in close proximity to the order boundary**

**Electricity Transmission**

National Grid Electricity Transmission has high voltage electricity overhead transmission lines, underground cables and high voltage substations which lie within or in close proximity to the proposed site boundary. The overhead lines, cables and substations form an essential part of the electricity transmission network in England and Wales and include the following:

**Overhead lines:**

- YYV (275kV) overhead line route
- YYX (275kV) overhead line route
- ZZA (400kV) overhead line route

**Underground cables**

- Greystones A1 275kV cable
- Greystones A2 275kV cable
- Greystones B3 275kV cable
- Greystones B4 275kV cable

**Substations:**

- Wilton 275kV Substation
- Greystones 66kV Substation
- Greystones A 275kV Substation
- Greystones B 275kV Substation

National Grid is a trading name for:  
National Grid Electricity Transmission plc  
Registered Office: 1-3 Strand, London WC2N 5EH  
Registered In England and Wales, No 2366977

National Grid is a trading name for:  
National Grid Gas plc  
Registered Office: 1-3 Strand, London WC2N 5EH  
Registered In England and Wales, No 2006000

## National Grid 3 of 4

**nationalgrid**

National Grid House  
Warwick Technology Park  
Gallows Hill, Warwick  
CV34 6DA

### Gas Transmission

National Grid Gas has no transmission pipelines within proximity of the indicative site boundary.

I enclose a plan showing the route of National Grid's overhead lines, the location of the substations and underground cables.

### Electricity Infrastructure:

- National Grid's Overhead Lines are protected by a Deed of Easement/Wayleave Agreement which provides full right of access to retain, maintain, repair and inspect our asset
- Statutory electrical safety clearances must be maintained at all times. Any proposed buildings must not be closer than 5.3m to the lowest conductor. National Grid recommends that no permanent structures are built directly beneath overhead lines. These distances are set out in EN 43 – 8 Technical Specification for "overhead line clearances Issue 3 (2004) available at: [http://www.nationalgrid.com/uk/LandandDevelopment/DDC/devnearohl\\_final/appendixIII/appIII-part2](http://www.nationalgrid.com/uk/LandandDevelopment/DDC/devnearohl_final/appendixIII/appIII-part2)
- If any changes in ground levels are proposed either beneath or in close proximity to our existing overhead lines then this would serve to reduce the safety clearances for such overhead lines. Safe clearances for existing overhead lines must be maintained in all circumstances.
- Further guidance on development near electricity transmission overhead lines is available here: <http://www.nationalgrid.com/NR/rdonlyres/1E990EE5-D068-4DD6-8C9A-4D0B06A1BA79/31436/Developmentnearoverheadlines1.pdf>
- The relevant guidance in relation to working safely near to existing overhead lines is contained within the Health and Safety Executive's ([www.hse.gov.uk](http://www.hse.gov.uk)) Guidance Note GS 6 "Avoidance of Danger from Overhead Electric Lines" and all relevant site staff should make sure that they are both aware of and understand this guidance.
- Plant, machinery, equipment, buildings or scaffolding should not encroach within 5.3 metres of any of our high voltage conductors when those conductors are under their worse conditions of maximum "sag" and "swing" and overhead line profile (maximum "sag" and "swing") drawings should be obtained using the contact details above.
- If a landscaping scheme is proposed as part of the proposal, we request that only slow and low growing species of trees and shrubs are planted beneath and adjacent to the existing overhead line to reduce the risk of growth to a height which compromises statutory safety clearances.
- Drilling or excavation works should not be undertaken if they have the potential to disturb or adversely affect the foundations or "pillars of support" of any existing tower. These foundations always extend beyond the base area of the existing tower and foundation ("pillar of support") drawings can be obtained using the contact details above
- National Grid Electricity Transmission high voltage underground cables are protected by a Deed of Grant; Easement; Wayleave Agreement or the provisions of the New Roads and

National Grid is a trading name for:  
National Grid Electricity Transmission plc  
Registered Office: 1-3 Strand, London WC2N 5EH  
Registered in England and Wales, No 2366977

National Grid is a trading name for:  
National Grid Gas plc  
Registered Office: 1-3 Strand, London WC2N 5EH  
Registered in England and Wales, No 2006000